

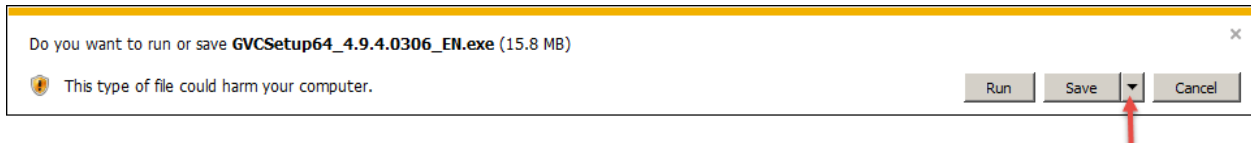
Download the version appropriate for your version of windows (32 bit or 64 bit);

<http://vpnsupport.brodart.com/brodart/>

click on the Download Button in the upper left corner of the screen

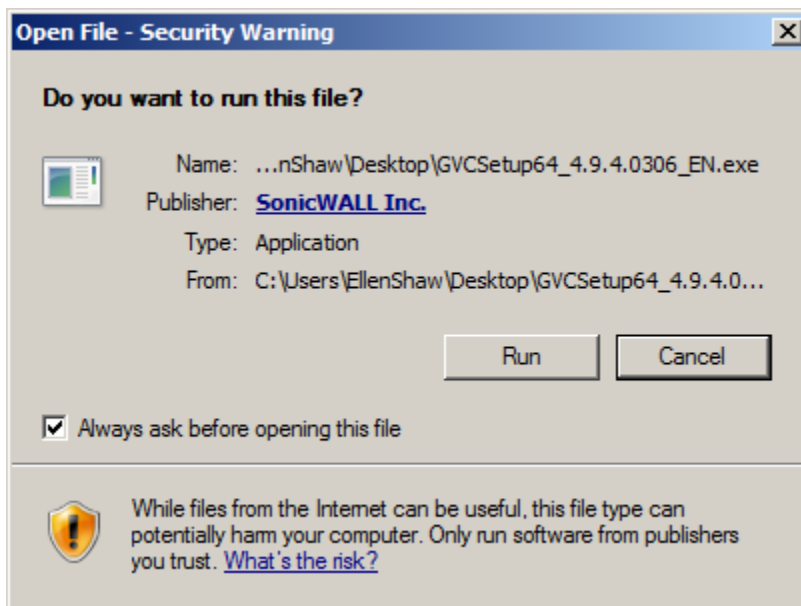
Copy the configuration file Brodart SonicWall VPN Client Config, to your desktop.

click on the arrow, and select save as, and save the program to your desktop

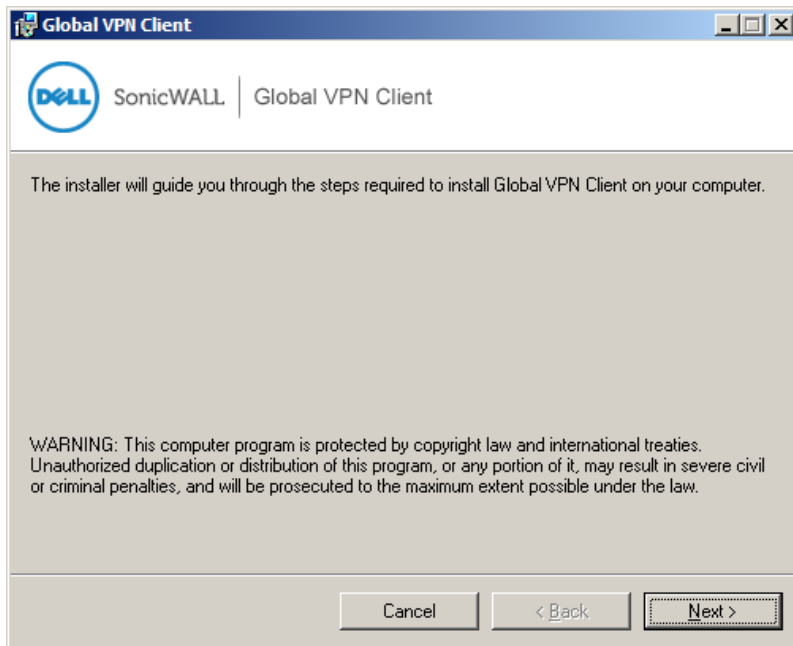


Double click the file on your desktop.

Select Run

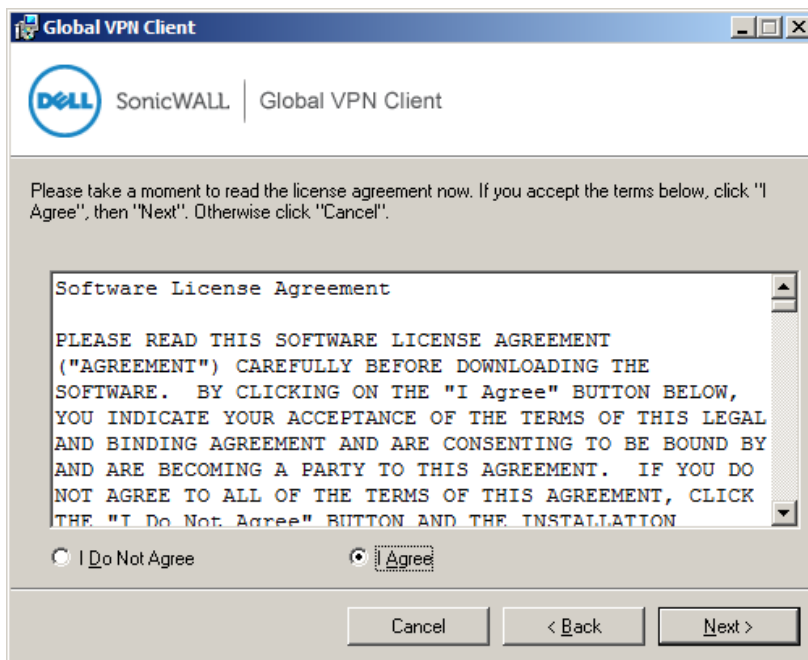


Select 'Next'

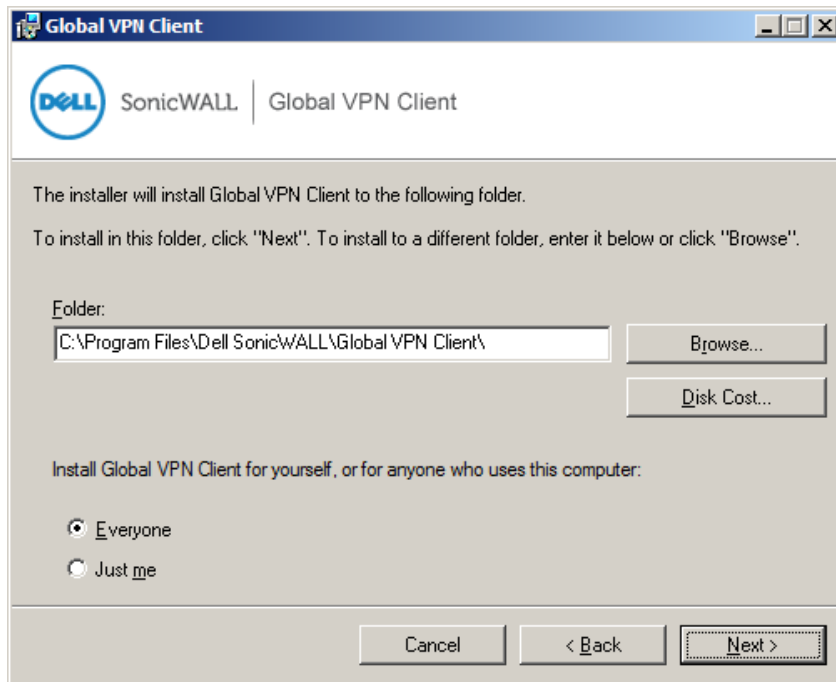


Select 'I Agree'

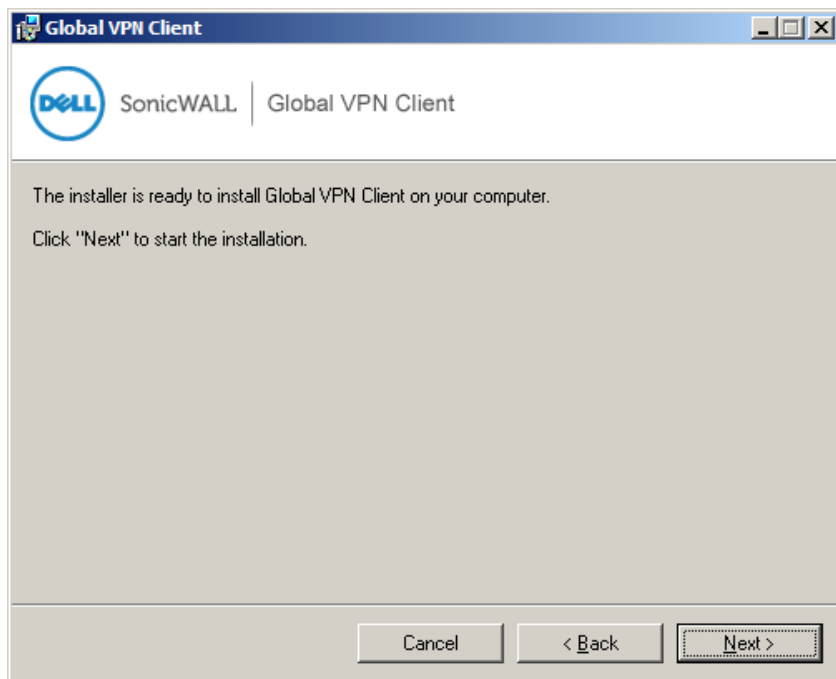
Select 'next'



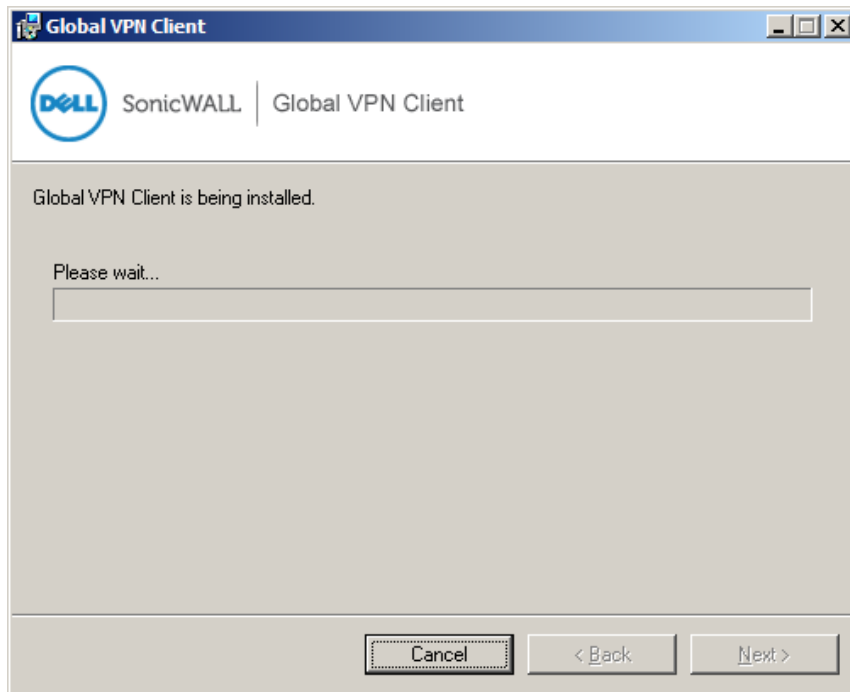
Leave 'everyone' selected, click on 'next'



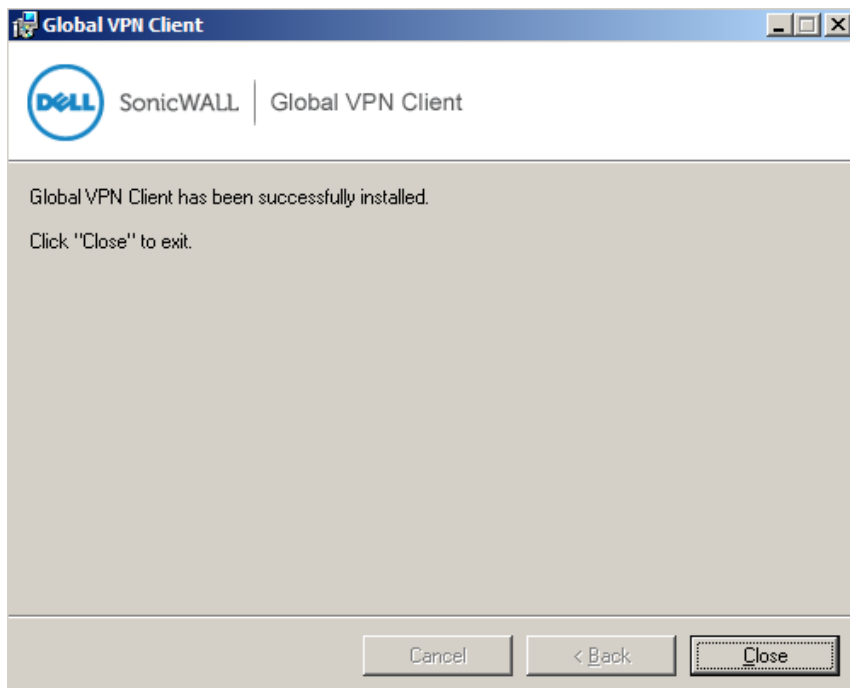
Click on 'next'



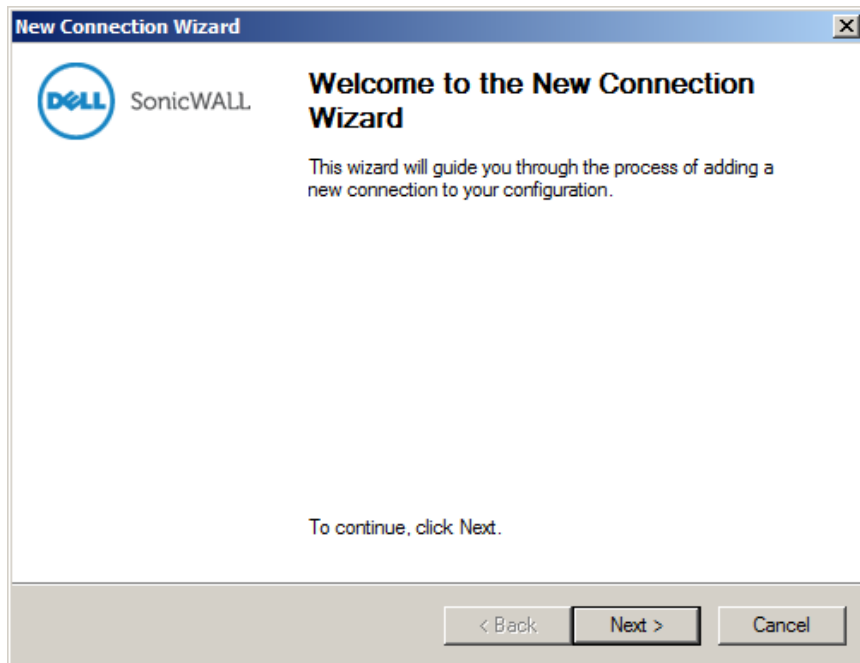
Click 'next' when the install finishes.



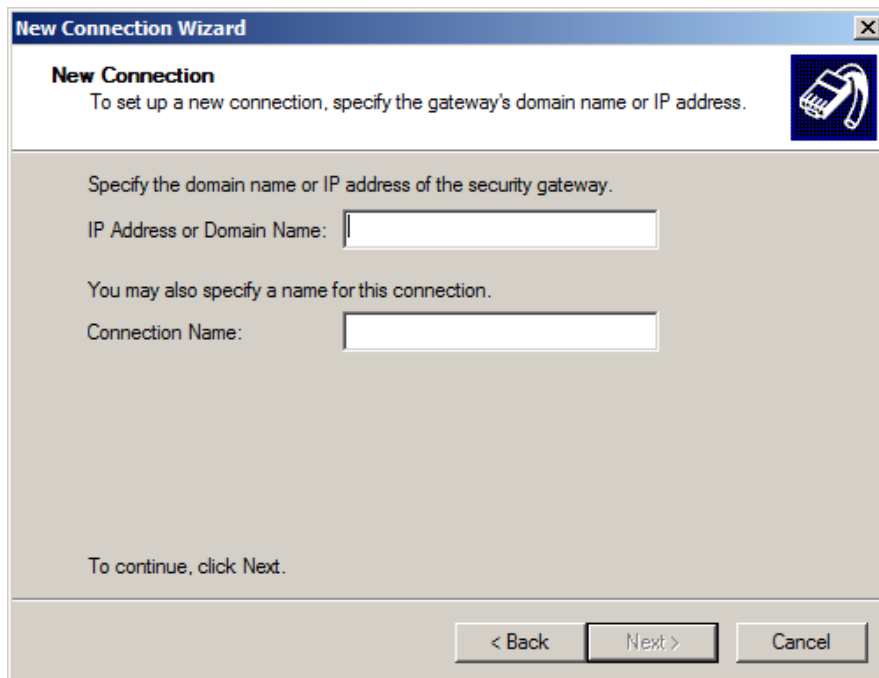
Select close



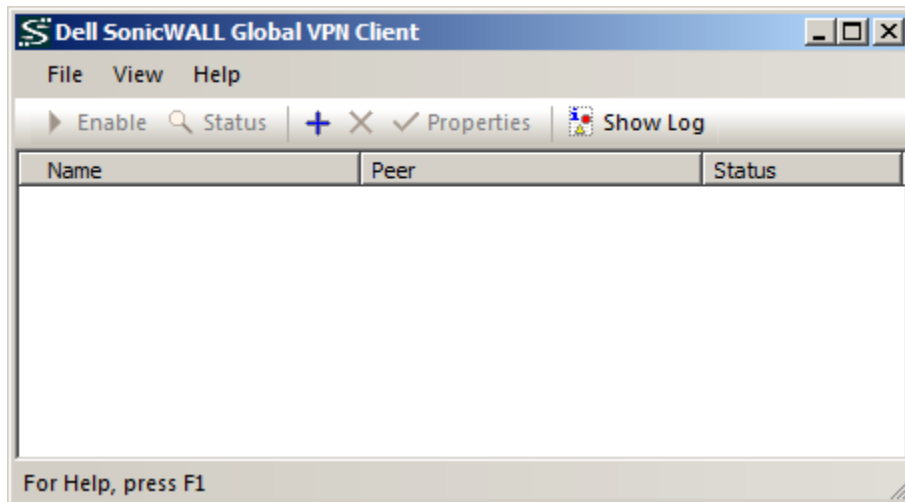
Select cancel



If you see this window, Select cancel

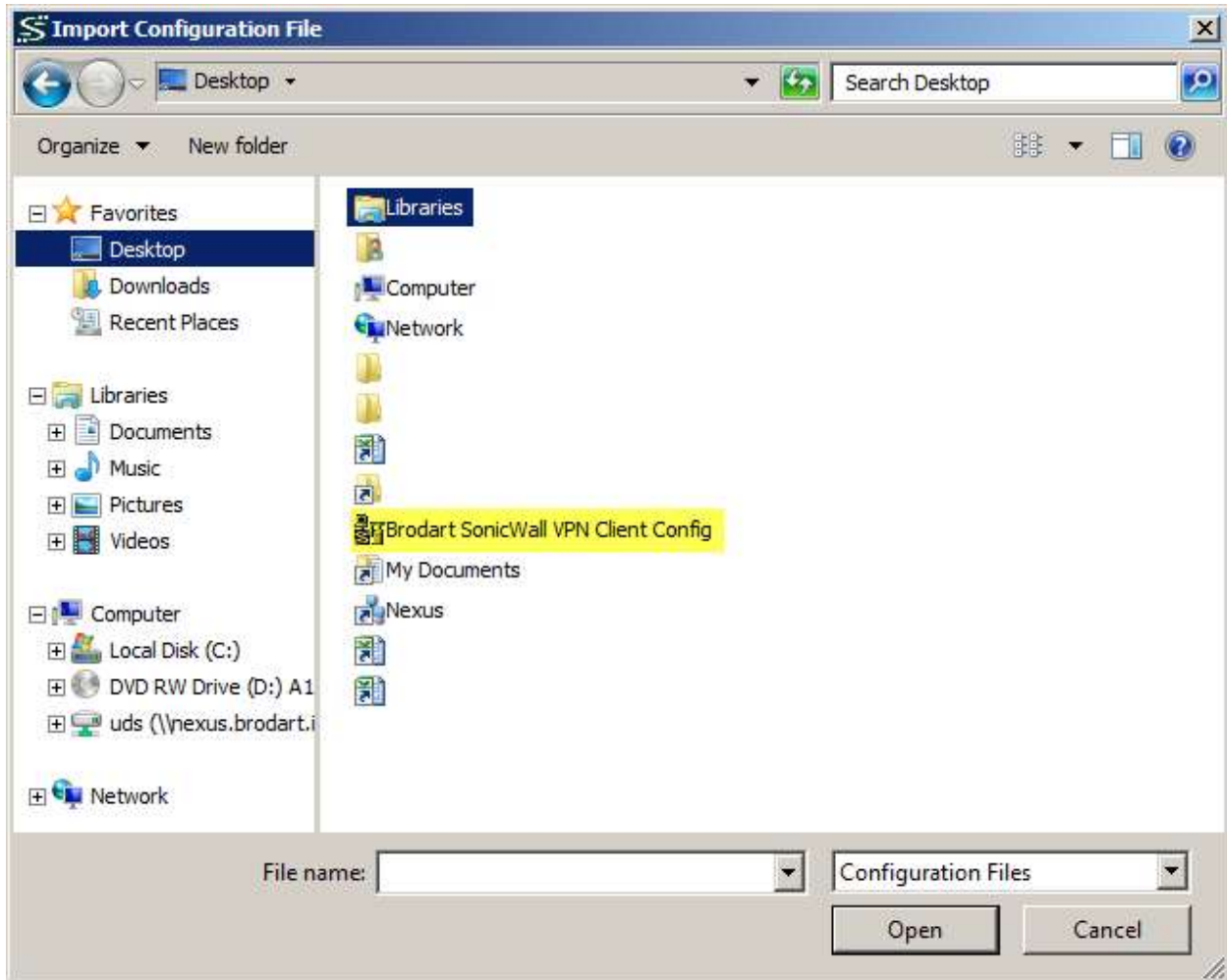


Select file, import

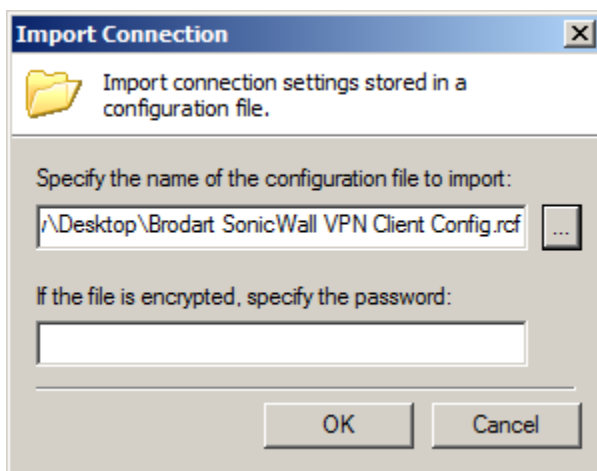


Click on box to the right, to search for the Brodart SonicWall VPN Client Config, on your desktop or where ever you have saved the file.

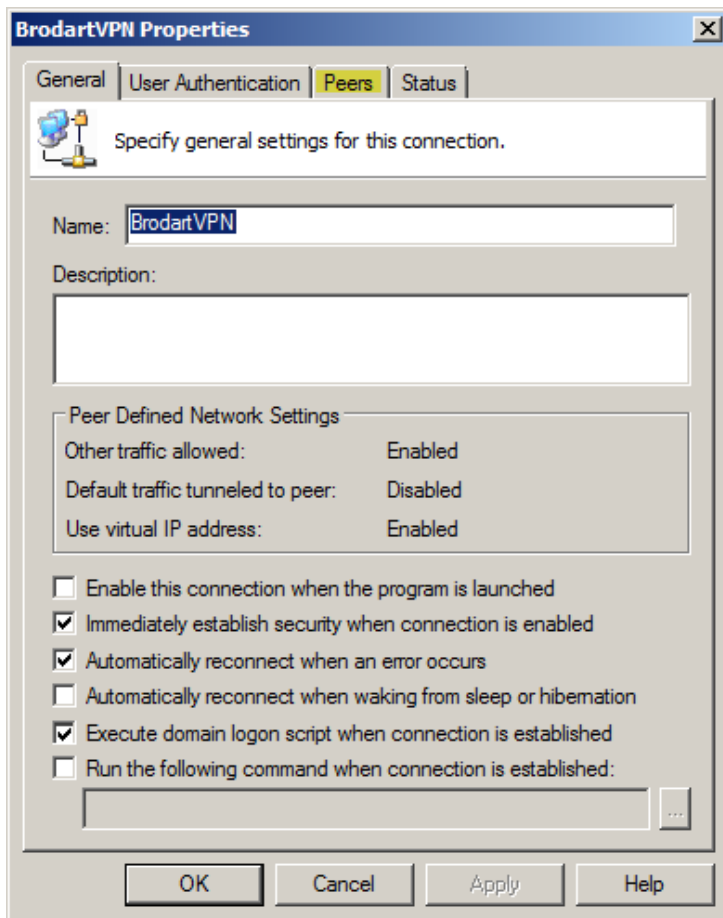
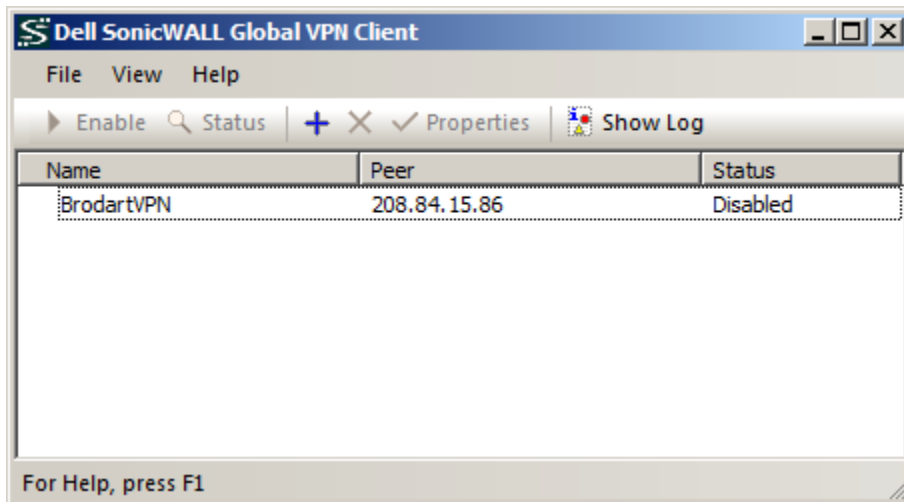




Select OK

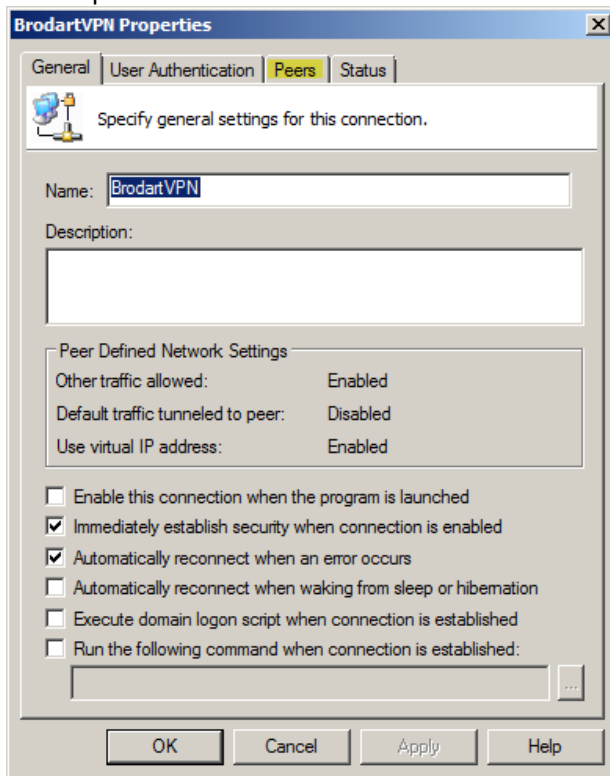


Select properties;

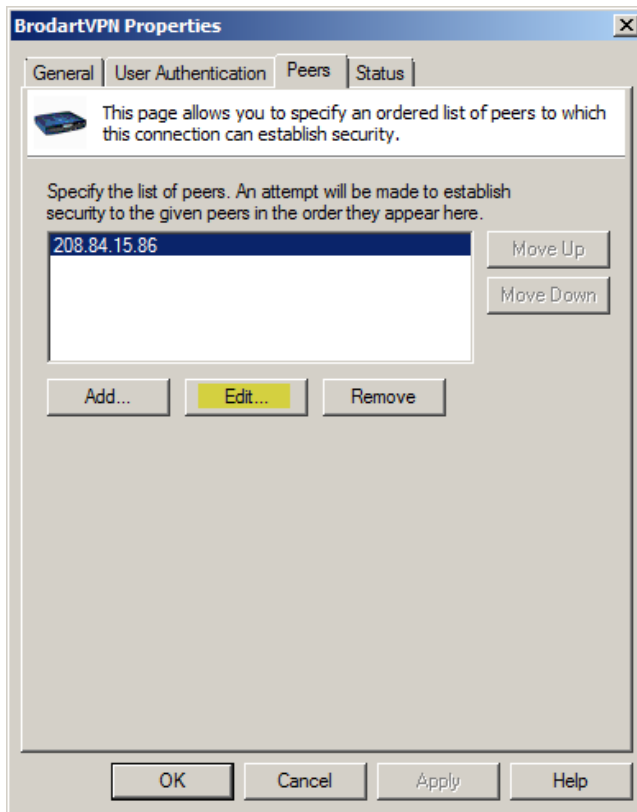


Execute domain logon script when connection is established. – should be checked.

Select 'peers' tab

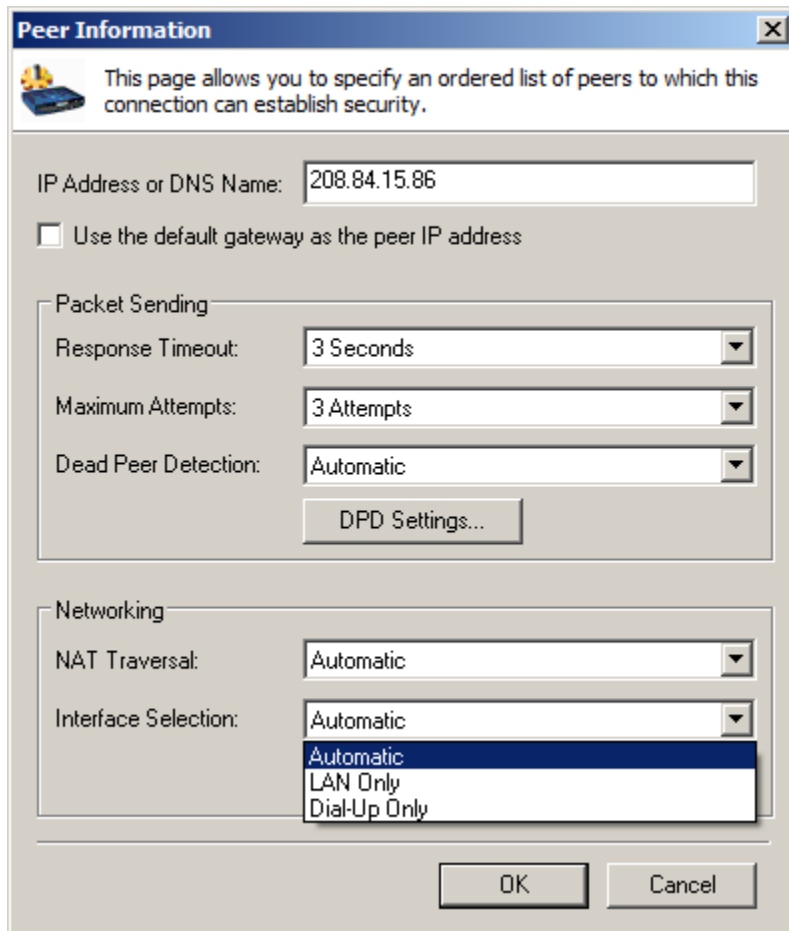


Select 'edit' button



In 'interface selection' drop down;

Select LAN only



The image shows a 'Peer Information' dialog box with a blue title bar and a close button. Below the title bar is a small icon of a laptop and a text box that reads: 'This page allows you to specify an ordered list of peers to which this connection can establish security.' The main area contains several fields: 'IP Address or DNS Name' with the value '208.84.15.86', a checkbox 'Use the default gateway as the peer IP address' which is unchecked, a 'Packet Sending' section with three dropdown menus: 'Response Timeout' (3 Seconds), 'Maximum Attempts' (3 Attempts), and 'Dead Peer Detection' (Automatic), and a 'DPD Settings...' button. Below that is a 'Networking' section with two dropdown menus: 'NAT Traversal' (Automatic) and 'Interface Selection' (Automatic). The 'Interface Selection' dropdown is open, showing a list with 'Automatic' selected, 'LAN Only', and 'Dial-Up Only'. At the bottom are 'OK' and 'Cancel' buttons.

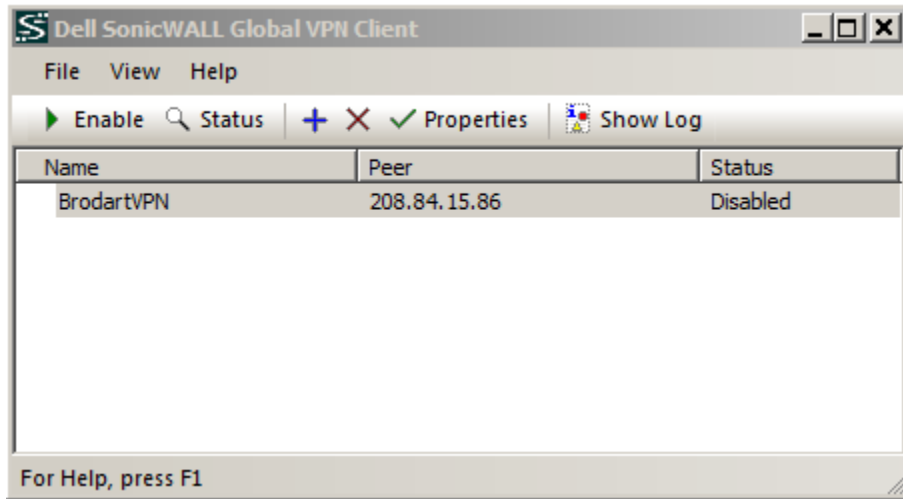
Then select okay.

Open VPN Client

Double click on “Sonic Wall VPN Client” Icon in your Desktop, if a shortcut was not created on your desktop, go to start menu all programs and select *Global VPN Client*



Select the enable option

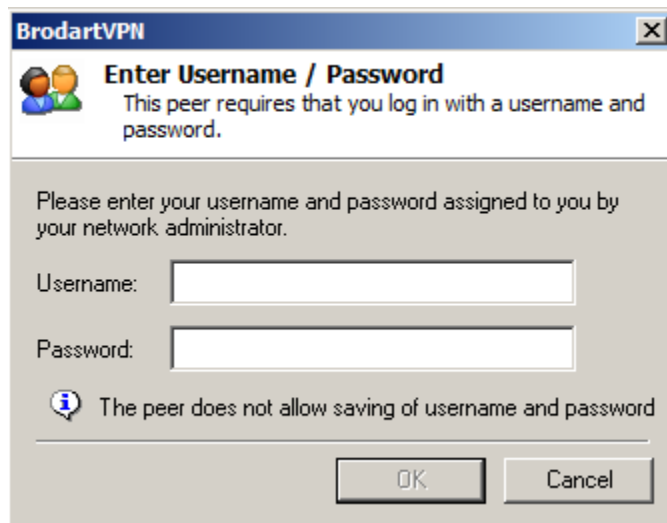


Enter username and password for VPN

Username<domain username> (example:JoeSmith)

Password: <domain password> (same password enter to log into windows)

Domain: <leave blank>



User name is case sensitive so the first letter of your first and last name must be capitalized.